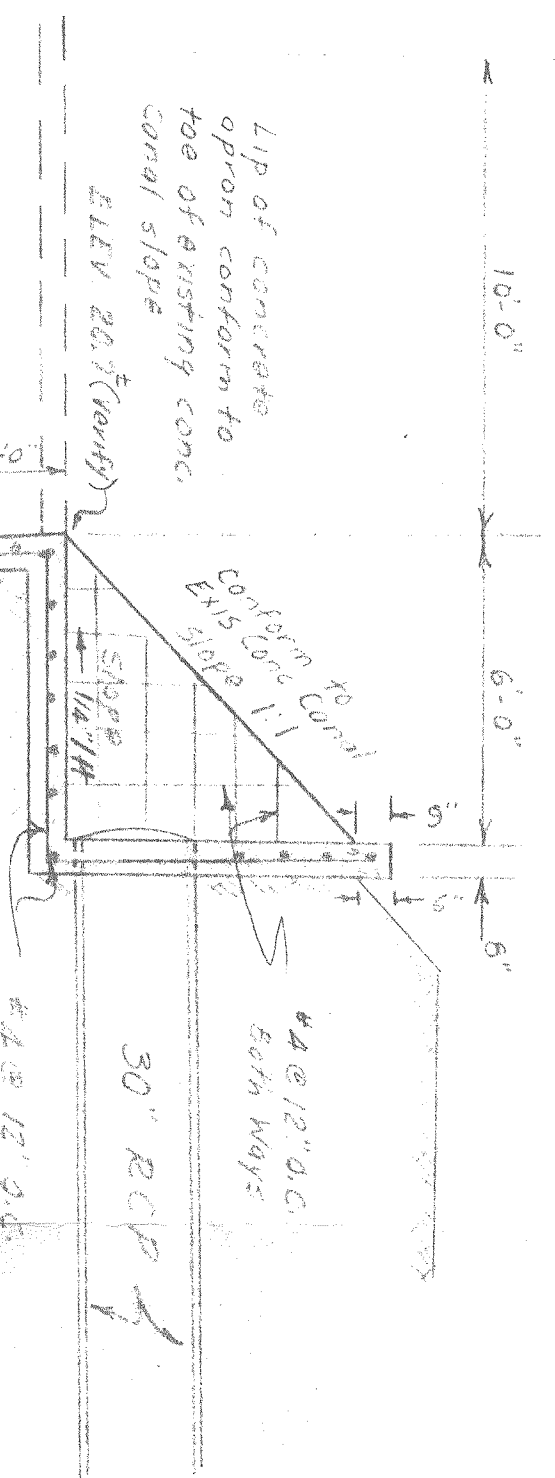
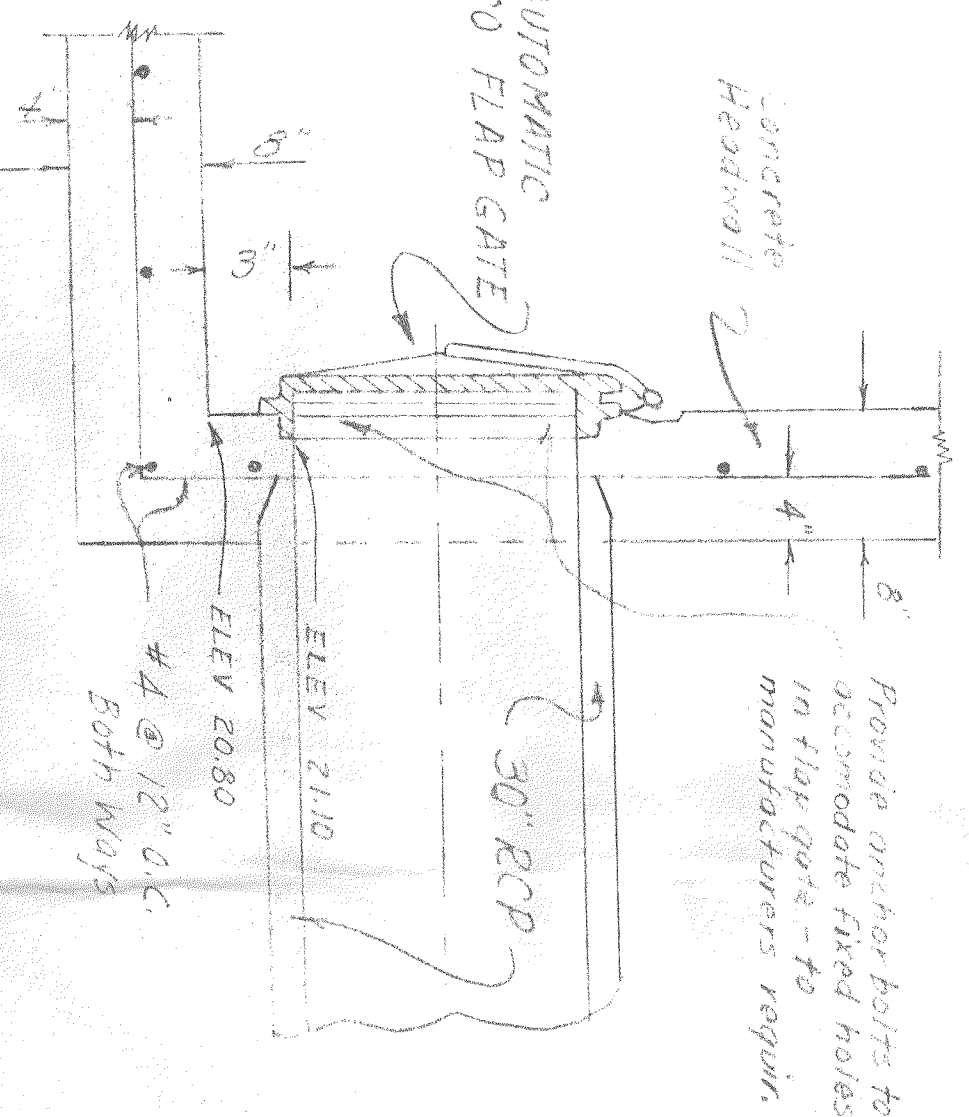


DETAIL A - TYPICAL PRECAST MANHOLE
SCALE 1/2" = 1'-0"



DETAIL B - HEADWALL AT CANAL
SCALE 1/2" = 1'-0"



DETAIL C - FLAP GATE
SCALE 1/2" = 1'-0"

CONVERT EXISTING CATCH BASIN TO MANHOLE
SEE DETAIL 'A'. COVER ELEV. TO BE ESTABLISHED
SEE IN FIELD.

EXISTING 27" RCP
INV. ELEV. 23.00'

INSTALL 27" RCP
N.O. 26 W
257.5'

CONSTRUCT NEW MANHOLE #2
SEE DETAIL 'A'

INV. 23.00'

257.5'

INV. 22.30'

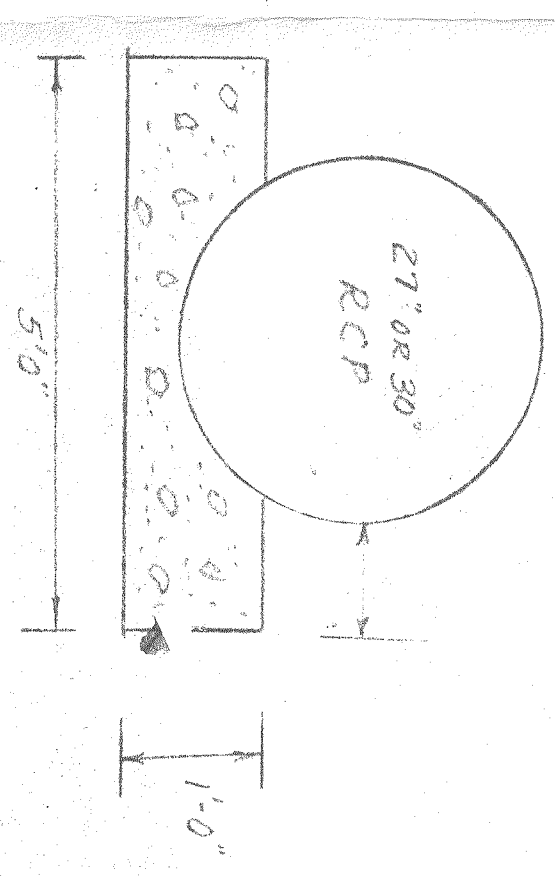
Average Existing ground Elev. 22.00'

257.5'

INV. 21.52'

1/2.5'

INV. 21.10'



TYPICAL SECTION - CONCRETE GRADE
No Scale

Credits Concrete to have 2000 psi comp. strength in 28 days

NOTE: PIPE INSTALLATION AND MANHOLES TO MEET REQUIREMENTS AS ESTABLISHED BY THE CITY OF SAN LEANDRO.

NOTE: HEADWALL AND FLAP GATE TO MEET STANDARDS ESTABLISHED BY ALAMEDA COUNTY FLOOD CONTROL DISTRICT.

BOULING ALLEY

CONSTRUCT HEADWALL SEE DETAIL 'B'
INSTALL 30" ARMO FLAP GATE
SEE DETAIL 'C'

CONSTRUCT NEW MANHOLE #3
SEE DETAIL 'A'

INSTALL 30" RCP
5.89' 27.45'E 16.38'
INV. ELEV. 21.10'

INV. ELEV. 22.30'

INSTALL 30" RCP
5.89' 27.45'E

296.2'

27.0' (control)

INV. ELEV. 21.52'

INSTALL 30" RCP
5.89' 27.45'E

30' FLOOD CONTROL EASEMENT
INV. ELEV. 21.10'

FORMER PRO. PROP. LINE 2
FORMER C&N
N.O. 26 W

8.1' ±

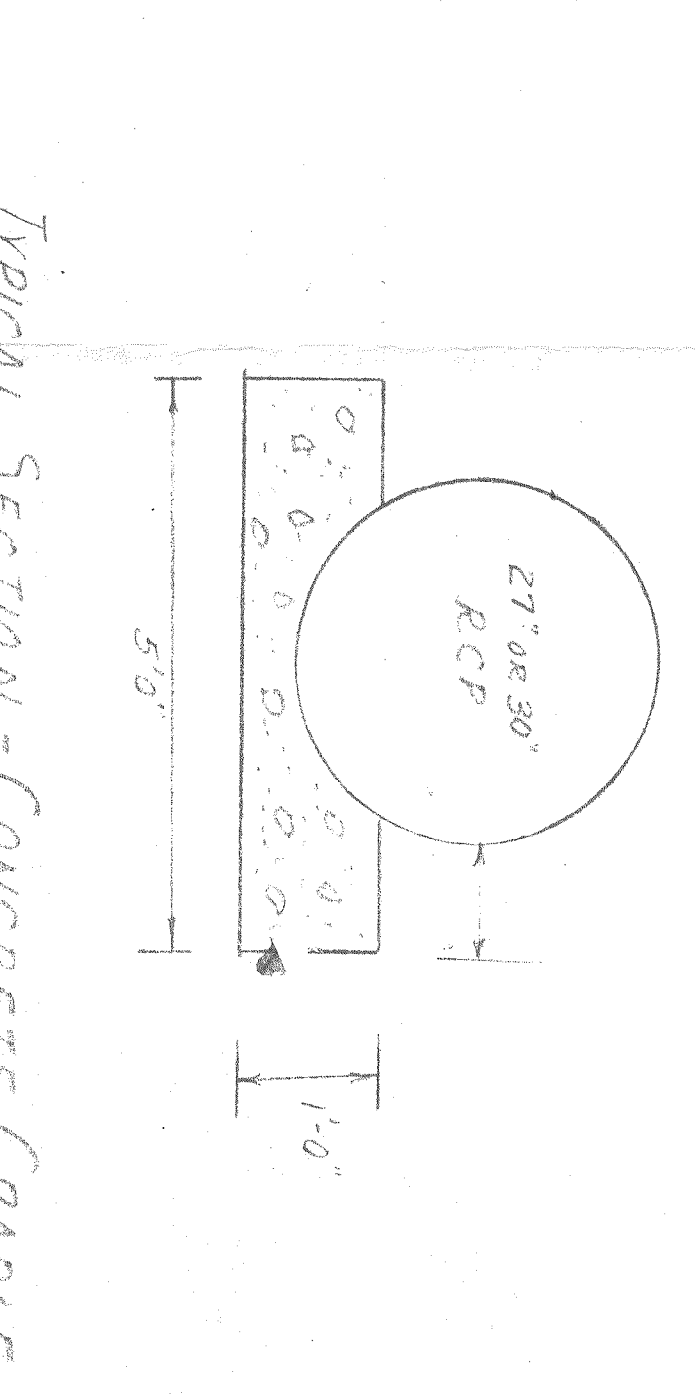
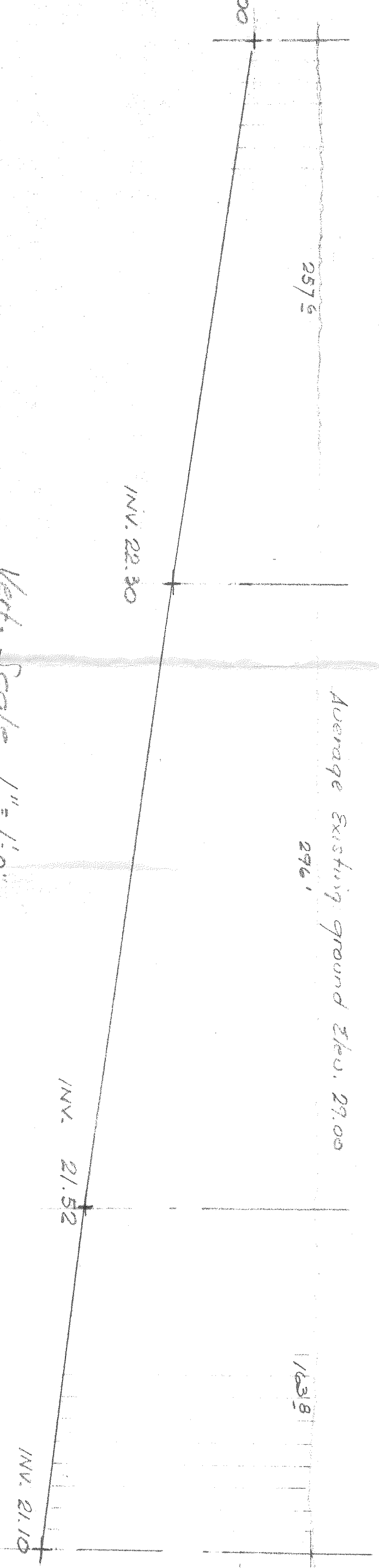
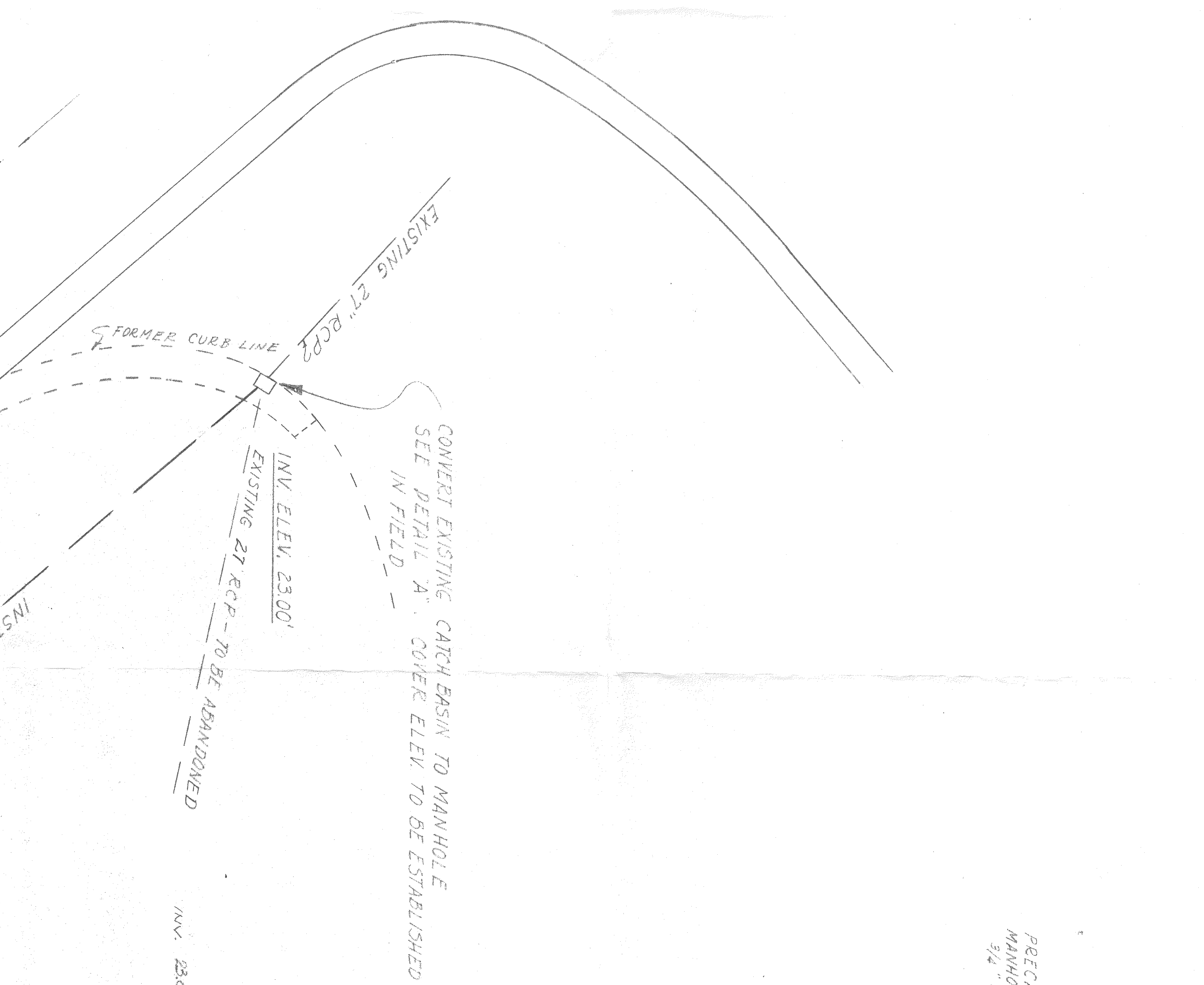
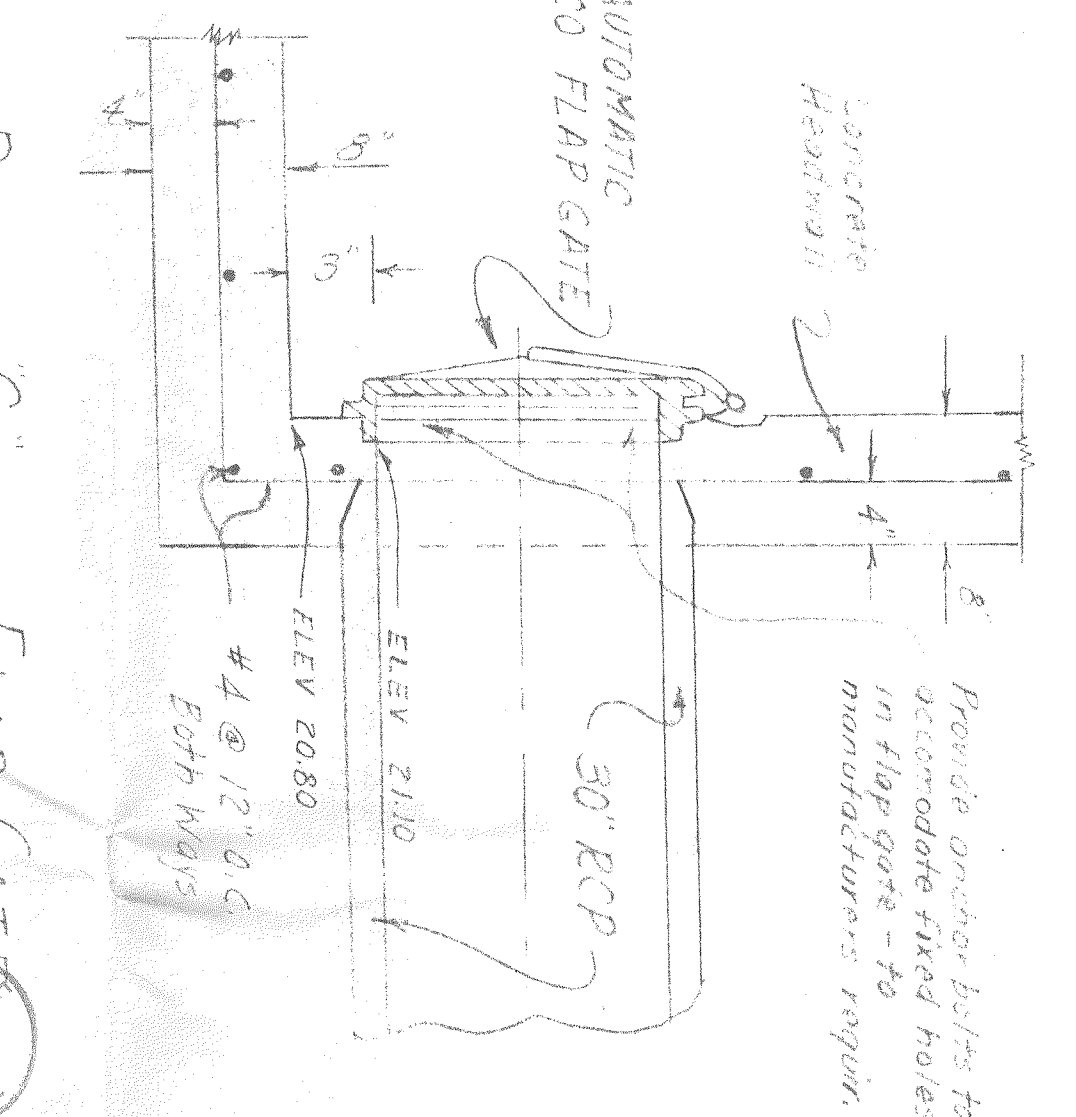
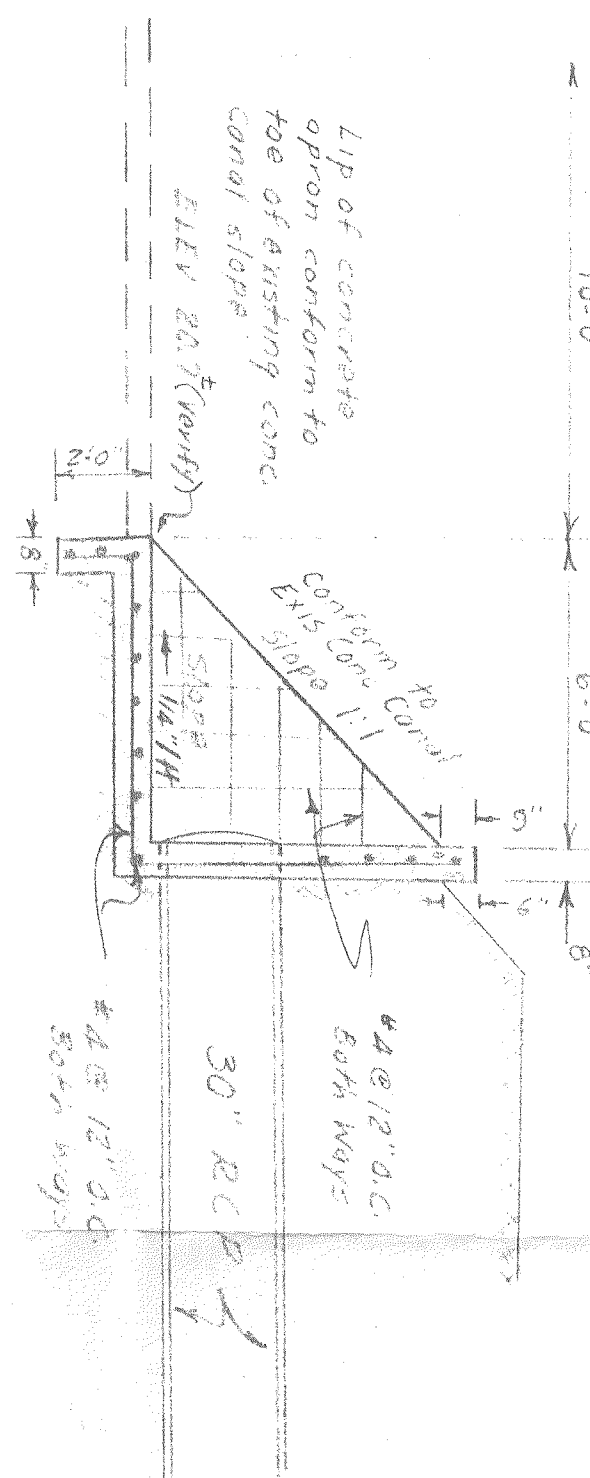
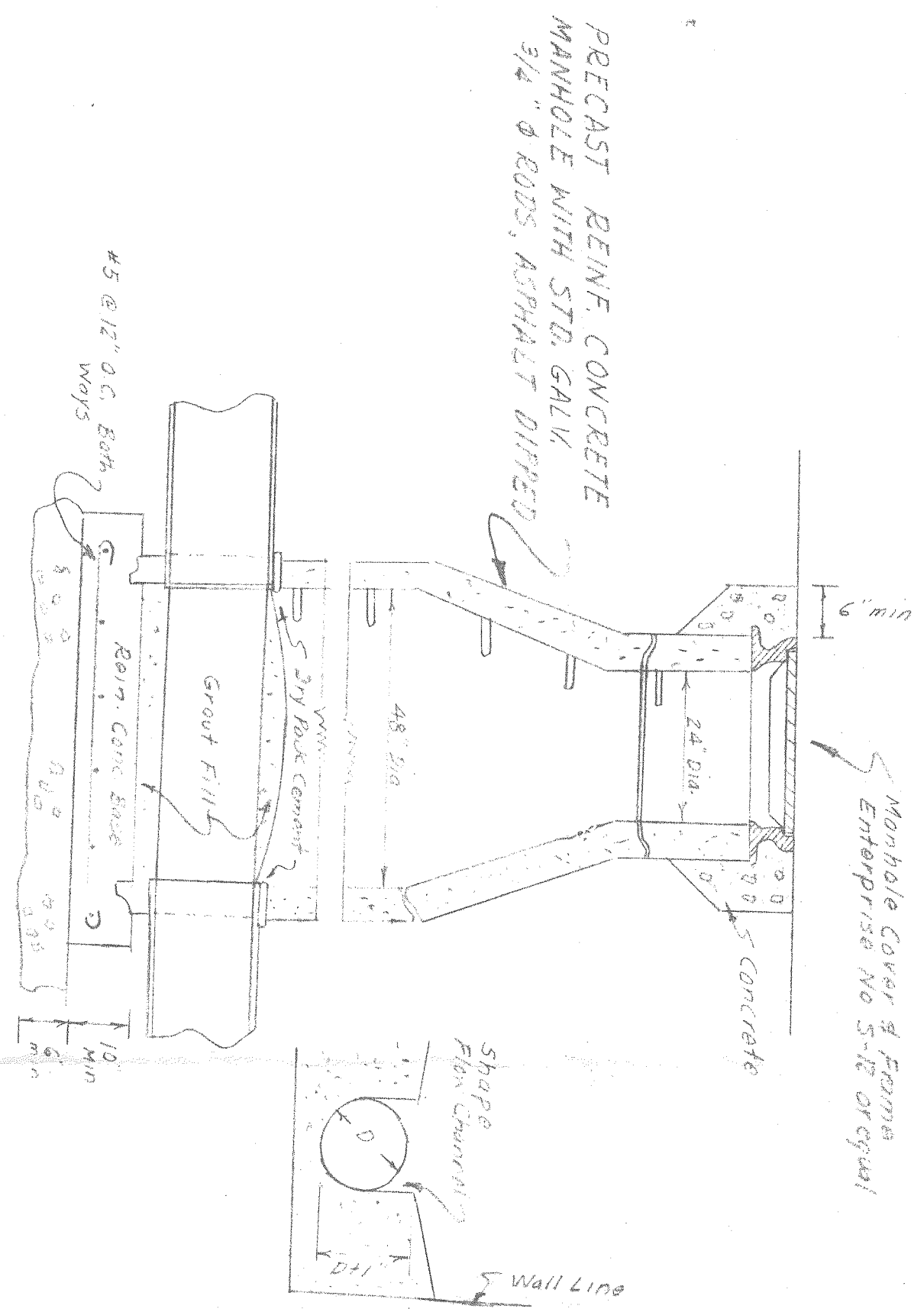
PROPERTY LINE

N. 43° 27' 45" W

W.P.R.R. R/W

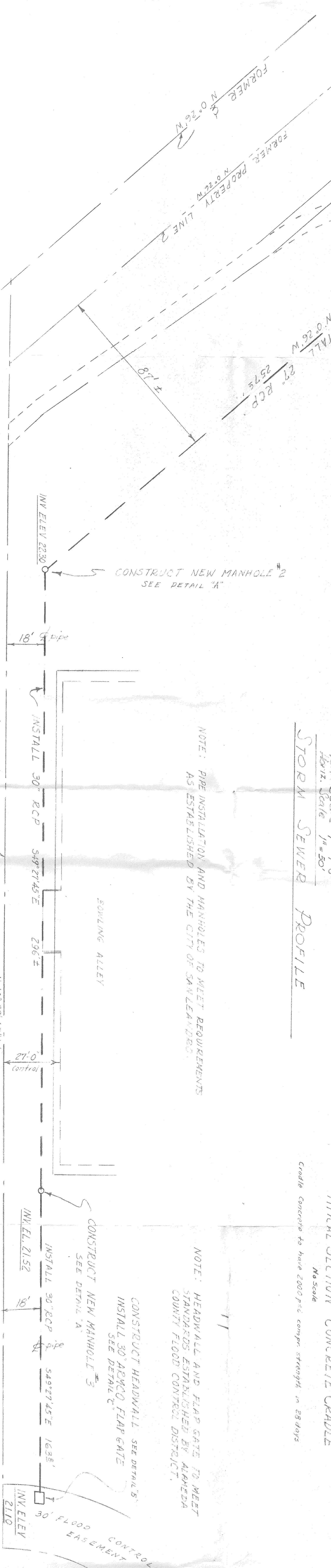
SCALE
1" = 1'-0"
DRAWN BY
SAN LEANDRO CALIF.
DATE
10/19/09
JOB NO.
DRAWING
JOB #1
5'

BAY FAIR SHOPPING CENTER
SAN LEANDRO CALIF.
SITE WORK
STORM DRAIN RELOCATION



NOTE: PIPE INSTALLATION AND MANHOLES TO MEET REQUIREMENTS AS ESTABLISHED BY THE CITY OF SAN LEANDRO.

NOTE: HEADWALL AND FLAP GATE TO MEET STANDARDS ESTABLISHED BY ALAMEDA COUNTY FLOOD CONTROL DISTRICT.



BAY FAIR SHOPPING CENTER
SAN LEANDRO - CALIF.
SITE WORK
STORM DRAIN RELOCATION

SCALE
1" = 20'
DRAWN BY
SAN LEANDRO
DATE
1/28/03
JOB NO.
DRAWING
SHEET 1
OF 1